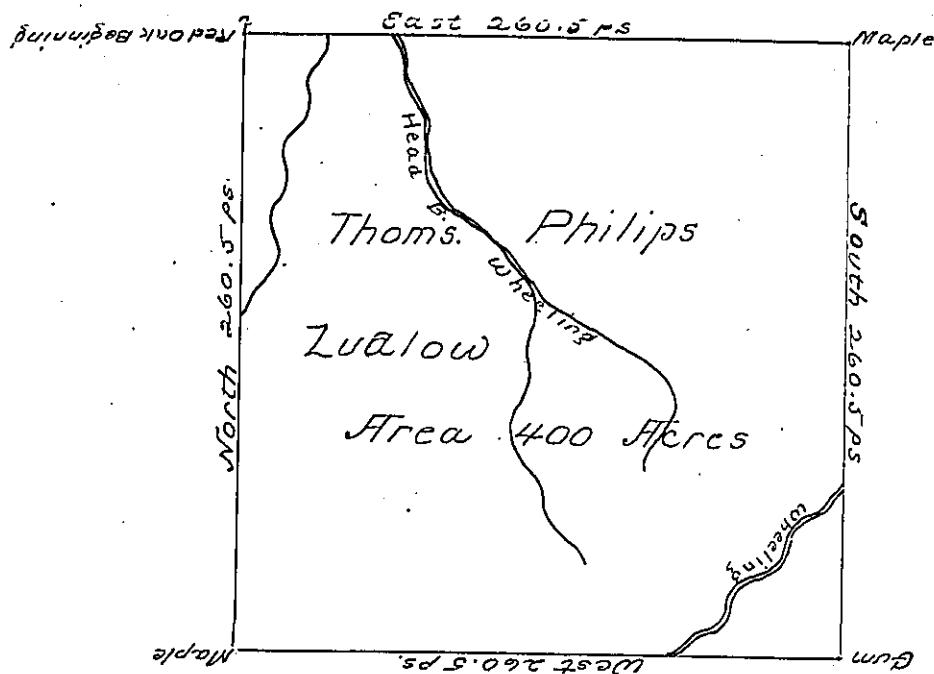


Adj. Lucy F. H. Leiper



Adj. Benjin McCulloch

Adj. Henry Simpson

The above is a Draught of a Survey made the 2d Day of Feb<sup>r</sup> 1785 in pursuance of a warrant granted to Thomas Phillips dated the 25th Day of Oct<sup>r</sup> 1784 Situate on the waters of ~~Wheeler's~~ Wheeler's Creek in Washington County called Lualow containing four hundred acres with usual allowances of 6 per Cent for Roads

Jno. Hoge L.S.

To John Lukens Esqr. Surv. Genl.

IN TESTIMONY that the above is a copy of the original remaining on file in the Department of Internal Affairs of Pennsylvania, made conformably to an Act of Assembly approved the 16th day of February, 1833, I have hereunto set my Hand and caused the Seal of said Department to be affixed at Harrisburg, this second day of July 1901

James W. Pitts  
Secretary of Internal Affairs.